

LM, LME, LMD, LMDE

50/60 Hz
Models C, D

PUMP SHAFT DIAMETER

Pump type			Hz/ Phase		Pos. 51 ø (mm)
LM	LMD		50 3~	60 3~	
40 -	50 -	125/142	x		ø16
				x	
	50 -	160/150	x		
		160/165	x		
	50 -	160/152		x	
		160/165		x	
		200/191	x		
		200/205	x		
50 -	65 -	125/117	x		
		125/128	x		
	65 -	125/117		x	
		125/128		x	
		160/154	x		
		160/165	x		
		160/154		x	
		160/165		x	
	65 -	200/189	x		
		200/202	x		
200/189			x		
200/202			x		
65 -	80 -	125/133	x		
		125/114		x	
		125/126		x	
		125/133		x	
	80 -	160/158	x		
		160/173	x		
		160/158		x	
	80 - (1)	160/173		x	
		200/187	x		
		200/202	x		
		200/198		x	
80 -	100 -	120/136	x		
		125/140	x		
		125/125		x	
		125/133		x	
	100 - (1)	125/140		x	
		160/162	x		
		160/168	x		
	80 - (3)	160/168	x		
		160/154	x		
	100 - (3)	160/168	x		
		160/152		x	
		160/168		x	
		200/187	x		
		200 - (1)	200/200	x	
			200/210	x	
		80 - (3)	200/187	x	
			200/202	x	
200 - (3)		200/187		x	
		200/205		x	
100 - (3)	160/162	x			
	160/168	x			
	200/187	x			
	200/200	x			
	200/210	x			

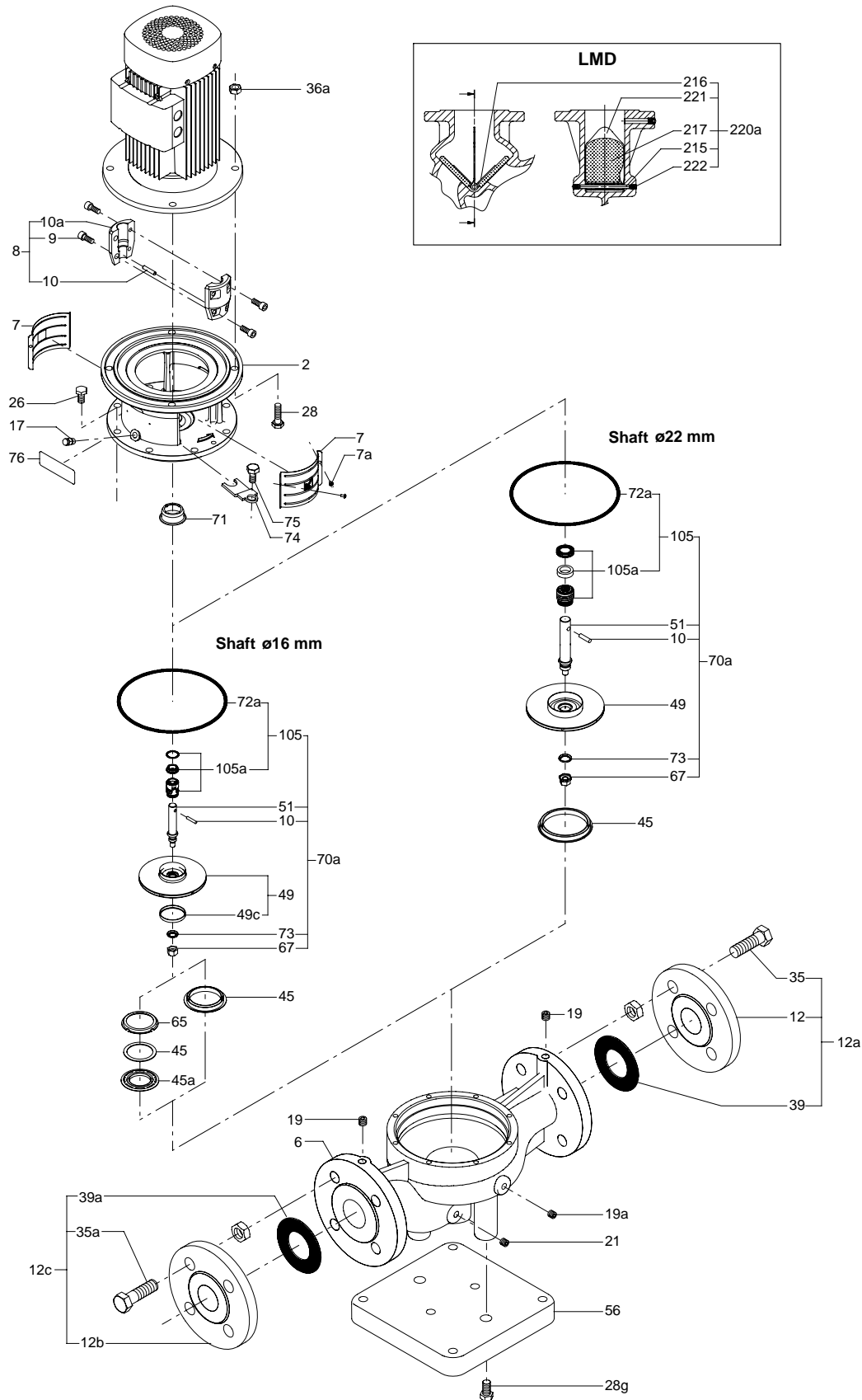
1) Model D.

2) Used as from week 19 1999 pump no. 9919.

3) Model C.

50/60 Hz
Models C, D

LM, LME, LMD, LMDE



LM, LME, LMD, LMDE

50/60 Hz
Models C, D

SHAFT SEAL KIT

Pos.	Kit no.	485113	485114	485351	485371	485278	485372	985845	985909
	PumpsShaft diam. (mm)	16	22	16	16	22	22	16	22
	Description	AUUE	AUUE	BUBE	BUBV	BBUE	BBUV	RUUE/V	RUUE/V
72a	O-ring	1	1	1	1	1	1	1	1
105a	Shaft seal			1	1	1	1		
	Shaft Seal	1	1					1	1

Pos.	Kit no.	985850	485454	485453	485460	485459	485458	485457
	Pump shaft diam. (mm)	16	16	22	16	16	22	22
	Description	AUUK	BUUE	BUUE	BQQE	BQQV	BQQE	BQQV
72a	O-ring	1	1	1	1	1	1	1
105a	Shaft seal		1	1	1	1	1	1
	Shaft Seal	1						

WEAR PARTS KIT

Pos.	Kit no.	485125	485122	485352	485279
	Pump shaft diam. (mm)	16	22	16	22
	Description	AUUE	AUUE	BUBE	BBUE
10	Coupling pin	1	1	1	1
45	Neckring	1		1	
49c	Wear ring	1		1	
51	Shaft	1	1	1	1
67	Lock nut	1	1	1	1
72a	O-ring	1	1	1	1
73	Lock washer	1	1	1	1
105a	Shaft seal			1	1
	Shaft seal	1	1		

COUPLING COMPLETE

Pos.	Kit no.	339114	339119	339124	339128	345107	345108
	D shaft motor/ump	14/16	19/16	24/16	28/16	28/22	38/22
	Description						
10a	Coupling half	2	2	2	2	2	2
9	Screw	4	4	4	4	4	4
10	Pin	1	1	1	1	1	1

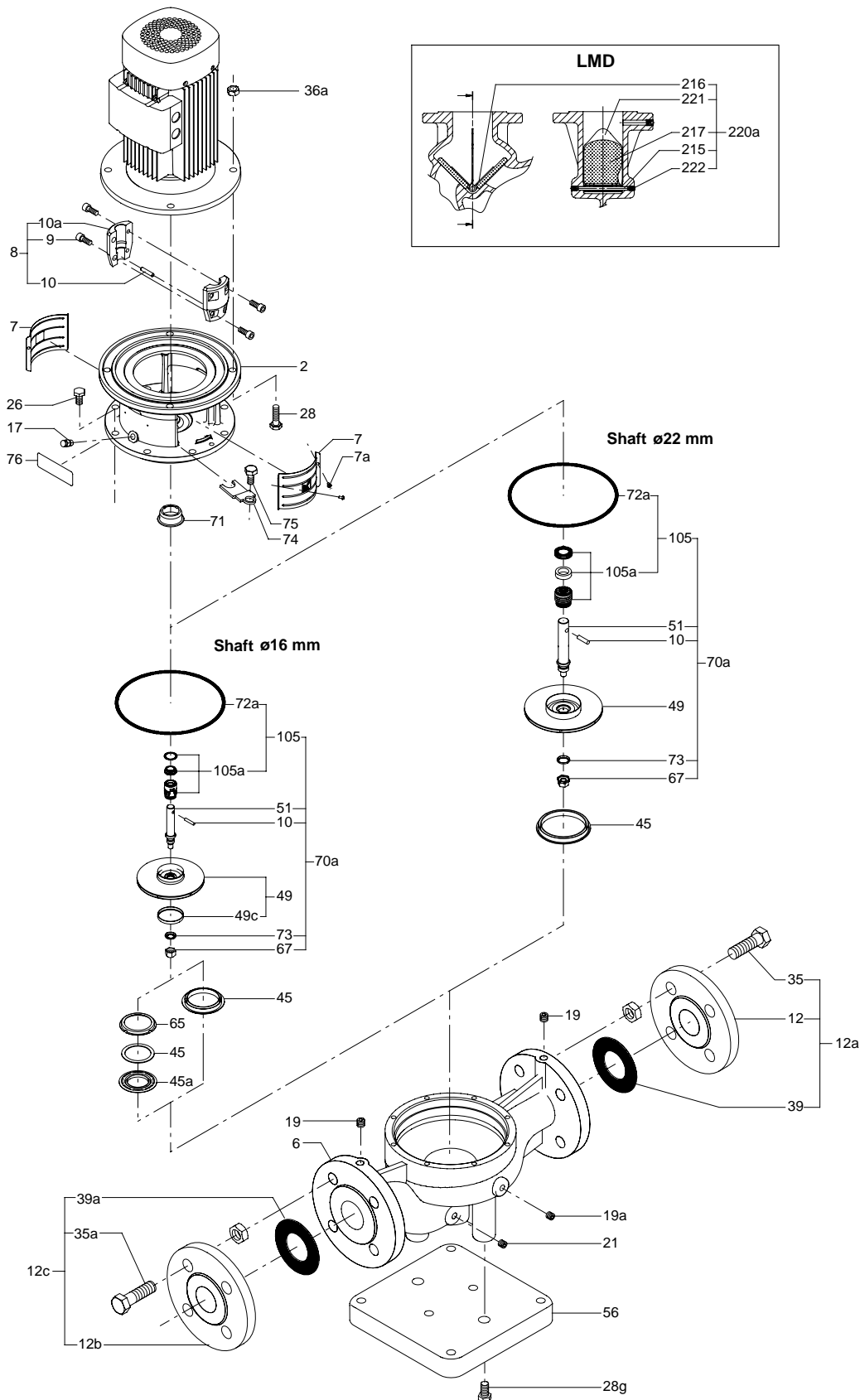
Pos.	Kit no.	NEMA	NEMA	NEMA	NEMA
	D shaftm motor/pump	485133	485134	485135	485140
	Description	15.9/16	28.6/16	28.6/22	34.9/22
10a	Coupling half	2	2	2	2
9	Screw	4	4	4	4
10	Pin	1	1	1	1

VALVE KIT FOR TWIN PUMPS

Pos.	Kit no.	LMD 50	LMD 65	LMD 80	LMD 100
	Description	485363	485364	485365	485366
	Description	1	1	1	1
215	Pin	1	1	1	1
216	Spring	1	1	1	1
217	Valve Flap	2	2	2	2
221	Dividing Plate			1	
222	Pipe Plug	2	2	2	2

50/60 Hz
Models C, D

LM, LME, LMD, LMDE



LP, LPE, LPD, LPDE

50/60 Hz
Models C, D

PUMP SHAFT DIAMETER

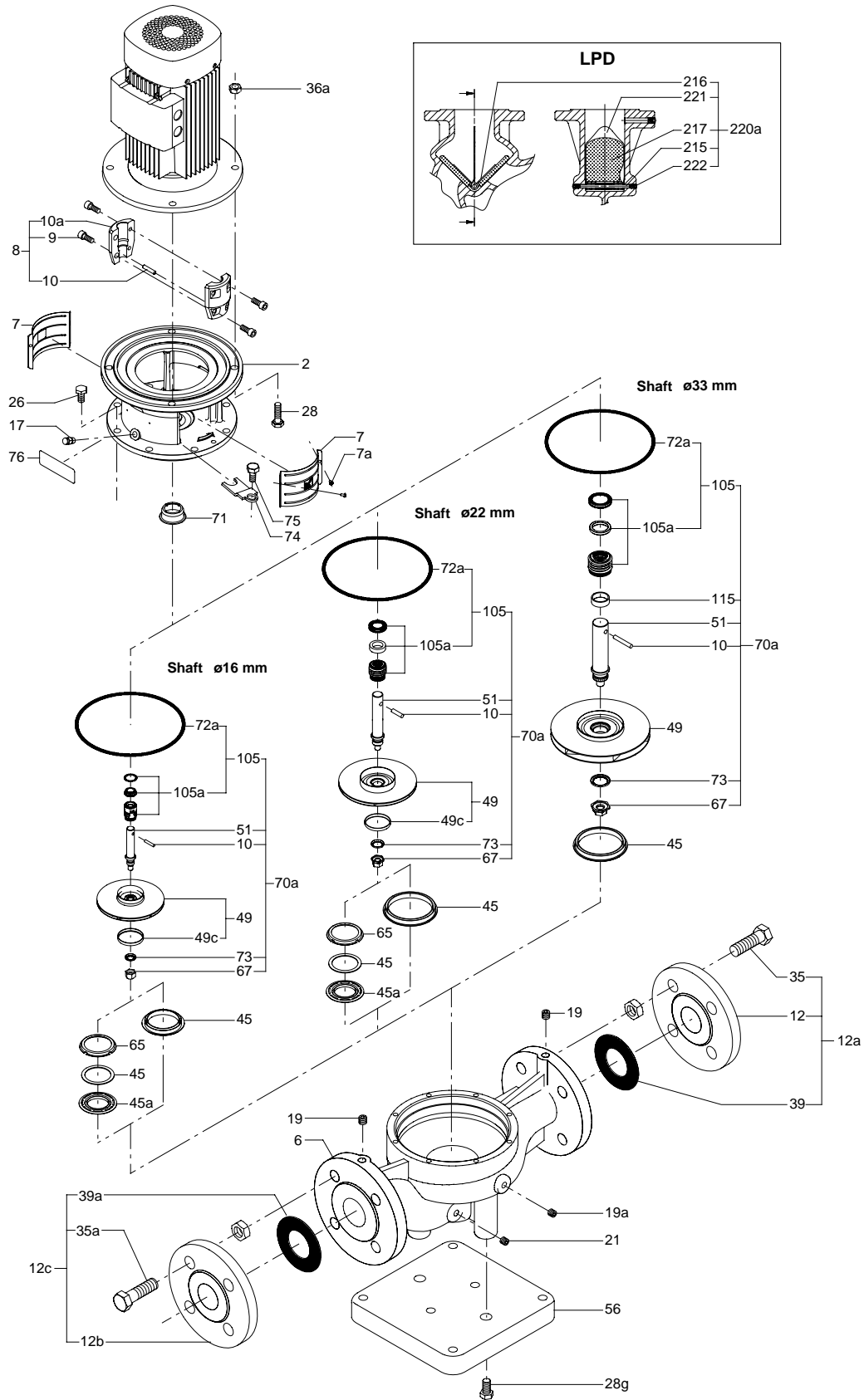
Pump type			Hz/ Phase		Pos. 51 ø(mm)	
LP	LPD		50 3~	60 3~		
50 -	65 -	125/132	x		ø16	
		125/142	x			
		125/123		x		
		125/142		x		
	65 -	160/152	x			
		160/165	x			
		160/152		x		
		160/165		x		ø22
		200/185	x			ø16
		200/205	x			ø22
65 -	80 - (2)	125/104	x		ø16	
		125/117	x			
		125/128	x			
		125/104		x	ø22	
		125/117		x		
		125/128		x		
	80 -		160/154	x		ø16
			160/165	x		
			160/154		x	
			160/165		x	ø22
			200/189	x		
			200/202	x		
80 -	100 - (2)	125/124	x		ø16	
		125/133	x			
	80 - (1)	125/104	x		ø16	
		125/107	x			
		125/128	x			
		125/128	x			
80 -		125/114		x	ø22	
		125/125		x		
		125/133		x		
		160/149	x			
		160/164	x			
80 -	100 -	160/136	x		ø22	
		160/156	x			
		160/154		x		
		160/168		x		
		200/180	x			
		200/202	x			
80 -	100 -	200/164	x		ø22	
		200/182	x			
		125/121	x			
		125/130	x			
100 -		125/137	x		ø22	
		125/121	x			
		125/125	x			
	125 -	125/134	x		ø16	
		125/124	x			
		125/133	x			
100 -		125/124		x	ø22	
		125/133		x		
		125/140		x		
	125 -		160/152	x		ø33
			160/168	x		
			200/183	x		
			200/191	x		
			200/210	x		

1) Model C.

2) Model D.

50/60 Hz
Models C, D

LP, LPE, LPD, LPDE



TM02 5295 2502

LP, LPE, LPD, LPDE

50/60 Hz
Models C, D

SHAFT SEAL KIT

Pos.	Kit no.	485113	485114	485351	485371	485278	485372	985845	985909
	Pump shaft diam. (mm)	16	22	16	16	22	22	16	22
	Description	AUUE	AUUE	BUBE	BUBV	BBUE	BBUV	RUUE/V	RUUE/V
72a	O-ring	1	1	1	1	1	1	1	1
105a	Shaft seal			1	1	1	1		
	Shaft seal	1	1					1	1

Pos.	Kit no.	985850	485454	485453	485460	485459	485458	485457	485456
	Pump shaft diam. (mm)	16	16	22	16	16	22	22	33
	Description	AUUK	BUUE	BUUE	BQQE	BQQV	BQQE	BQQV	BQQE
72a	O-ring	1	1	1	1	1	1	1	1
105a	Shaft seal		1	1	1	1	1	1	1
	Shaft seal	1							

Pos.	Kit no.	485455	485353	485373	485448	985624	985625
	Pump shaft diam. (mm)	33	33	33	33	33	33
	Description	BQQV	BBUE	BBUV	BUUE	GQQE	GQQV
72a	O-ring	1	1	1	1	1	1
105a	Shaft seal	1	1	1			
	Shaft seal				1	1	1

WEAR PARTS KIT

Pos.	Kit no.	485125	485122	485352	485279	485354	485449
	Pump shaft diam. (mm)	16	22	16	22	33	33
	Description	AUUE	AUUE	BUBE	BBUE	BBUE	BUUE
10	Coupling pin	1	1	1	1	1	1
45	Neckring	1		1			
49c	Wear ring	1		1			
51	Shaft	1	1	1	1	1	1
67	Lock nut	1	1	1	1	1	1
72a	O-ring	1	1	1	1	1	1
73	Lock washer	1	1	1	1	1	1
105a	Shaft seal			1	1	1	1
	Shaft seal	1	1				
115	Spacer					1	1

COUPLING COMPLETE

Pos.	Kit no.	339119	339124	339128	345107	345108	345109
	D shaft motor/pump	19/16	24/16	28/16	28/22	38/22	42/22
	Description						
10a	Coupling half	2	2	2	2	2	2
9	Screw	4	4	4	4	4	4
10	Pin	1	1	1	1	1	1

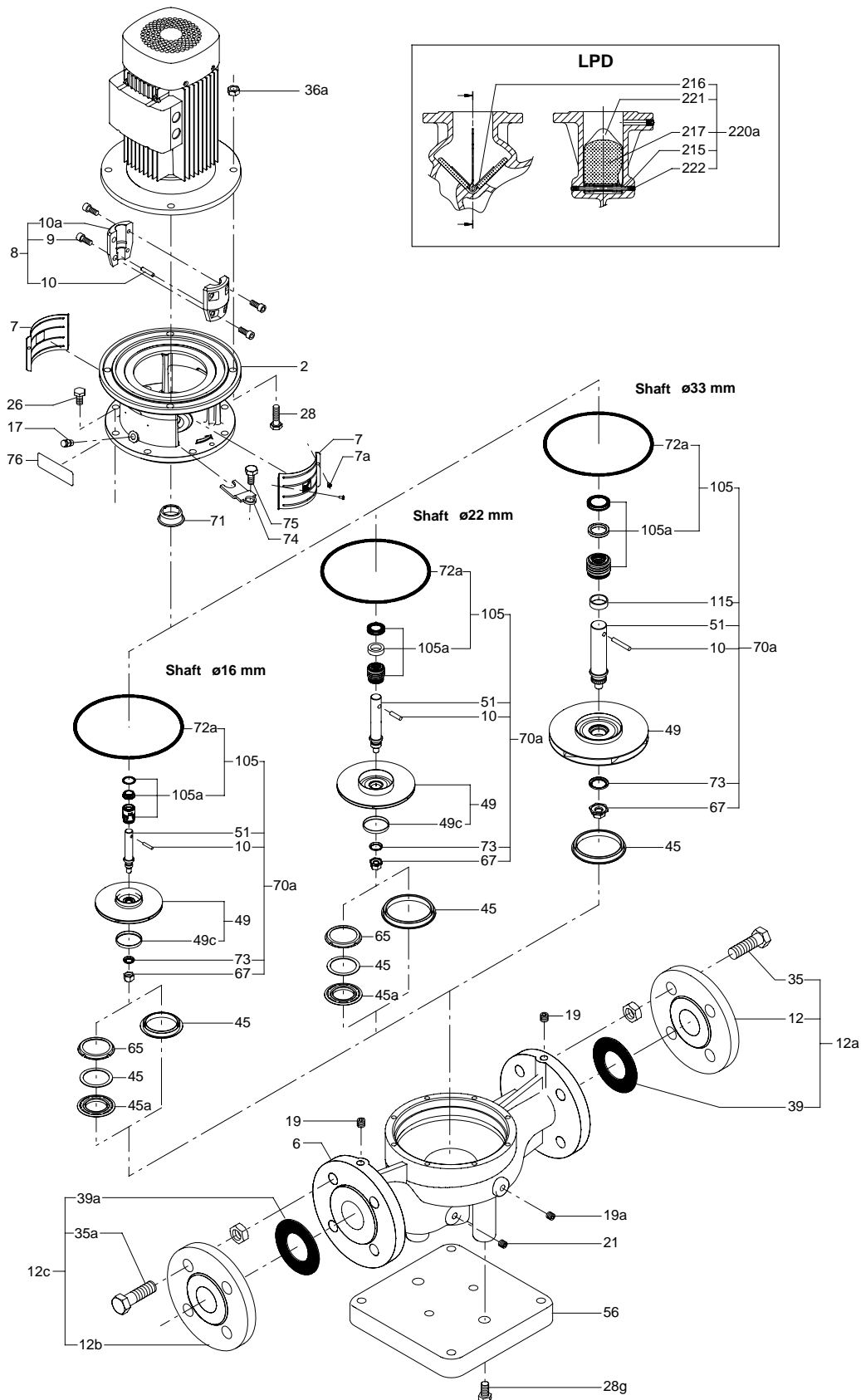
Pos.	Kit no.	485071	485039	485040	NEMA 485134	NEMA 485140	NEMA 485160
	D shaft motor/pump	42/33	48/33	55/33	28.6/16	34.9/22	41.3/22
	Description						
10a	Coupling half	2	2	2	2	2	2
9	Screw	4	4	4	4	4	4
10	Pin	1	1	1	1	1	1

VALVE KIT FOR TWIN PUMPS

Pos.		LPD 65	LPD 80	LPD 100
	Kit no.	485364	485365	485366
	Description			
215	Pin	1	1	1
216	Spring	1	1	1
217	Valve flap	2	2	2
221	Dividing plate		1	
222	Pipe plug	2	2	2

50/60 Hz
Models C, D

LP, LPE, LPD, LPDE



NM, NME, DNM, DNME

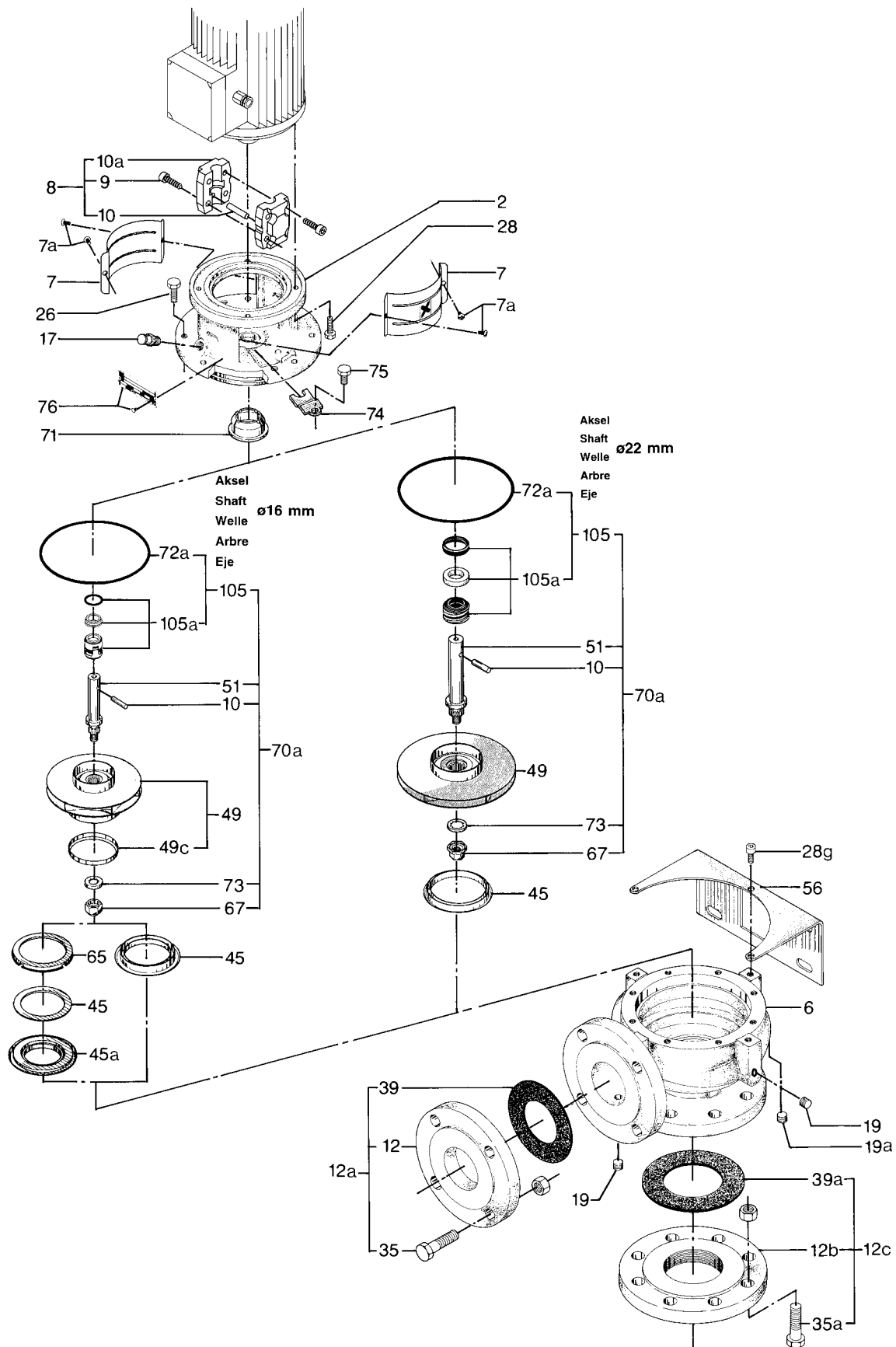
50/60 Hz
Model A

PUMP SHAFT DIAMETER

Pump type					Pos. 51 ø (mm)
50 Hz				PN 16	
NME	DNME	NM	DNM		
		x		50 - 32 -	125/142
			x	32 -	
		x		50 - 32 -	160/150
x					160/165
			x	32 -	160/150
	x				160/165
x		x		50 - 32 -	200/191
					200/205
	x		x	32 -	200/191
					200/191
x		x		65 - 50 -	125/128
	x		x	40 -	125/128
x		x		65 - 50 -	160/154
					160/165
	x		x	40 -	160/154
					160/165
x		x		65 - 40 -	200/189
					200/202
	x		x	40 -	200/189
					200/202
x		x		80 - 65 -	125/133
	x		x	50 -	125/133
x		x		80 - 65 -	160/154
					160/168
	x		x	50 -	160/154
					160/168
x		x		80 - 50 -	200/187
					200/202
	x		x	50 -	200/187
					200/202
x		x		100 - 80 -	125/136
					125/140
	x		x	65 -	125/136
					125/140
x		x		100 - 80 -	160/162
					160/168
	x		x	65 -	160/162
					160/168
x				100 - 65 -	200/187
					200/200
x					200/210
	x				200/187
			x	65 -	200/200
	x				200/210

50/60 Hz
Model A

NM, NME, DNM, DNME



TM00 5732 1495

NM, NME, DNM, DNME

50/60 Hz
Model A

SHAFT SEAL KIT

Pos.	Kit no.	485113	485114	485351	485371	485278	485372	985845	985909
	Pump shaft diam. (mm)	16	22	16	16	22	22	16	22
	Description	AUUE	AUUE	BUBE	BUBV	BBUE	BBUV	RUUE/V	RUUE/V
72a	O-ring	1	1	1	1	1	1	1	1
105a	Shaft seal			1	1	1	1		
	Shaft seal	1	1					1	1

Pos.	Kit no.	985850	485454	485453	485460	485459	485458	485457
	Pump shaft diam. (mm)	16	16	22	16	16	22	22
	Description	AUUK	BUUE	BUUE	BQQE	BQQV	BQQE	BQQV
72a	O-ring	1	1	1	1	1	1	1
105a	Shaft seal		1	1	1	1	1	1
	Shaft seal	1						

WEAR PARTS KIT

Pos.	Kit no.	485125	485122	485352	485279
	Pump shaft diam. (mm)	16	22	16	22
	Description	AUUE	AUUE	BUBE	BBUE
10	Coupling pin	1	1	1	1
45	Neckring	1		1	
49c	Wear ring	1		1	
51	Shaft	1	1	1	1
67	Lock nut	1	1	1	1
72a	O-ring	1	1	1	1
73	Lock washer	1	1	1	1
105a	Shaft seal			1	1
	Shaft seal	1	1		

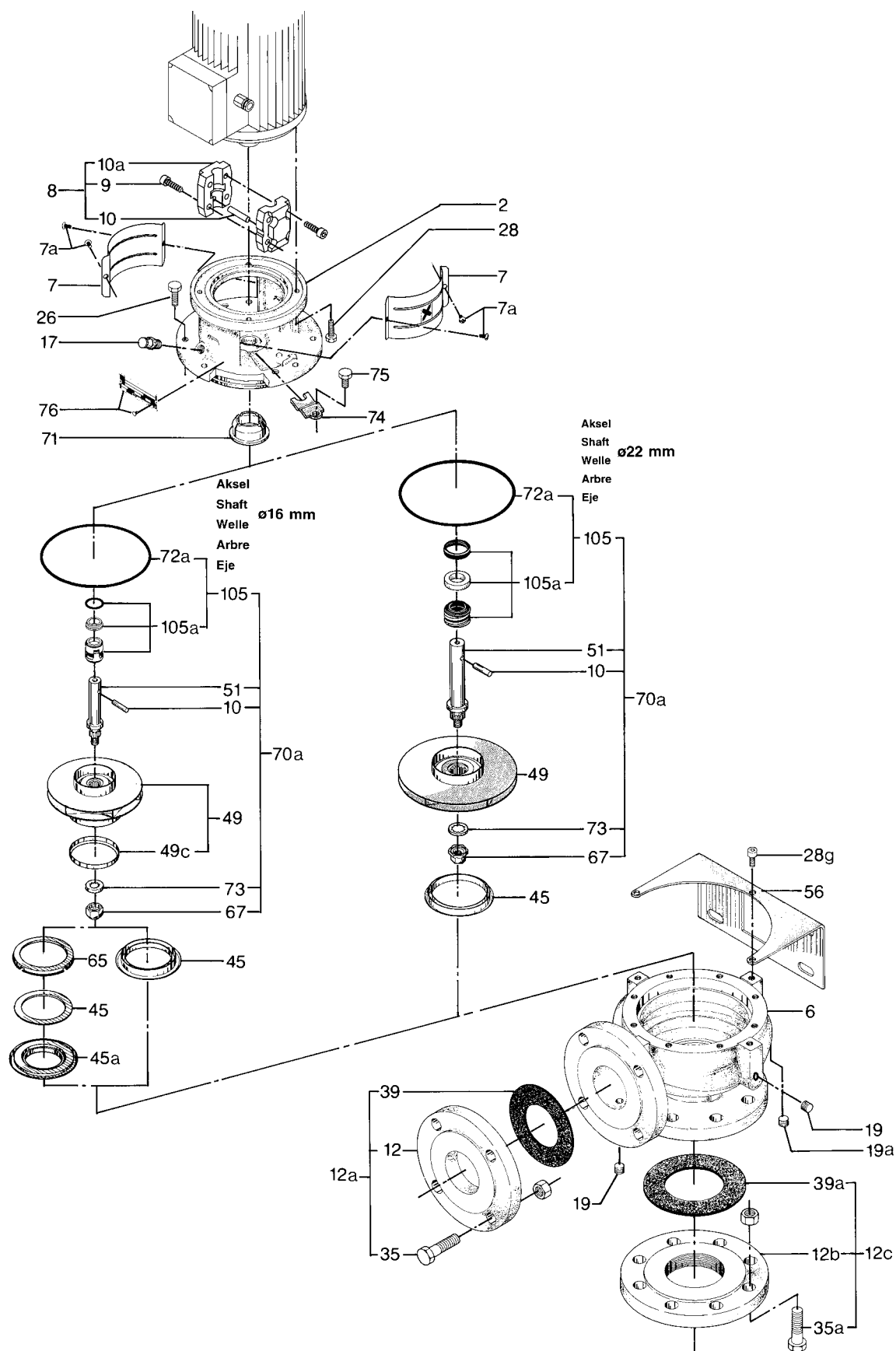
COUPLING COMPLETE

Pos.	Kit no.	339114	339119	339124	339128	345107	345108
	D shaft motor/pump	14/16	19/16	24/16	28/16	28/22	38/22
	Description						
10a	Coupling half	2	2	2	2	2	2
9	Screw	4	4	4	4	4	4
10	Pin	1	1	1	1	1	1

Pos.	Kit no.	NEMA	NEMA	NEMA	NEMA
	D shaft motor/pump	485133	485134	485135	485140
	Description	15.9/16	28.6/16	28.6/22	34.9/22
10a	Coupling half	2	2	2	2
9	Screw	4	4	4	4
10	Pin	1	1	1	1

50/60 Hz
Model A

NM, NME, DNM, DNME



NP, NPE, DNP, DNPE

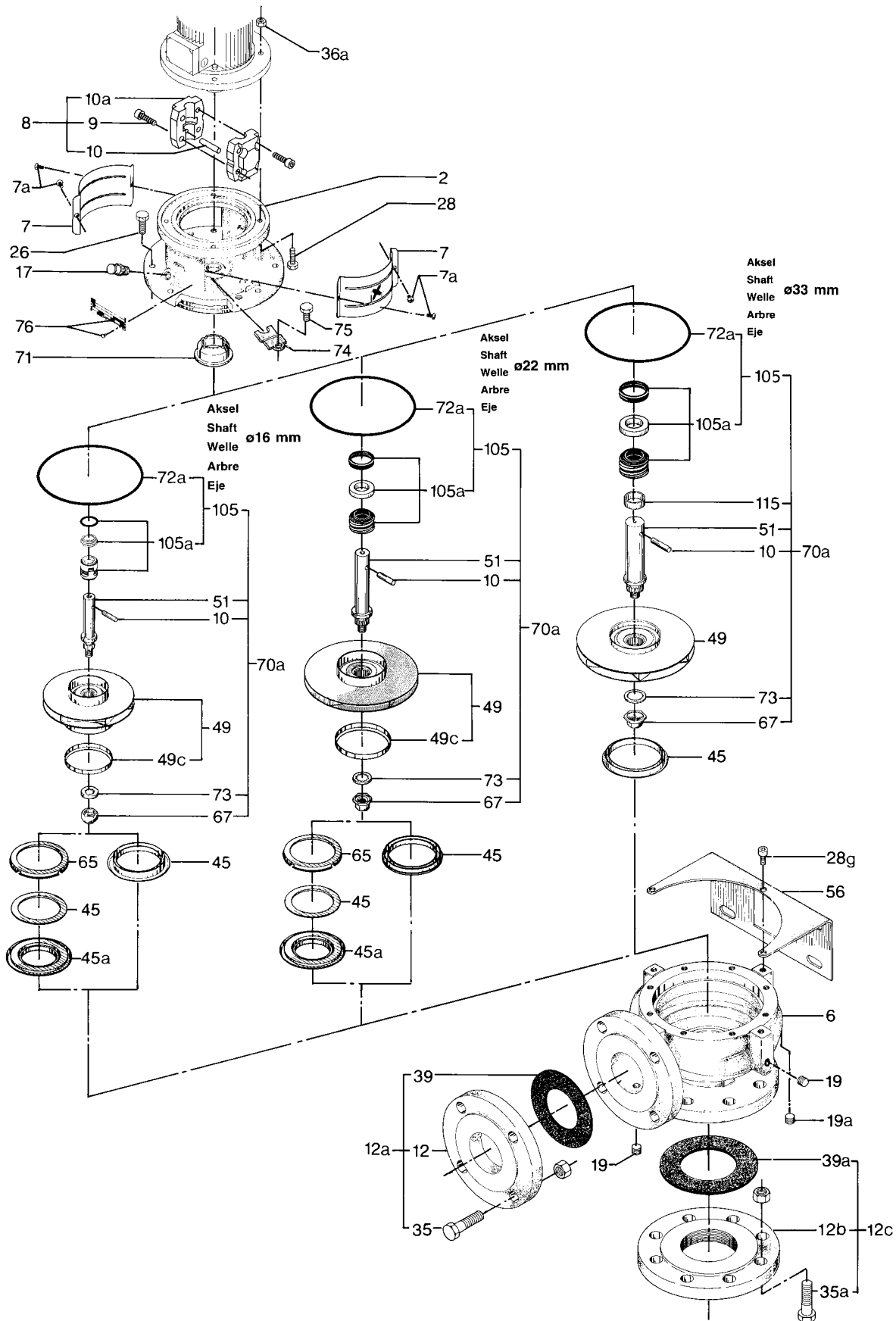
50/60 Hz
Model A

PUMP SHAFT DIAMETER

Pump type					Pos. 51 ø(mm)	
50 Hz				PN 16		
NPE	DNPE	NP	DNP			ø16
					ø22	
					ø33	
x		x		50 - 32 - 125/132	ø16	
				125/142		
	x		x	32 - 125/132		
				125/142		
x		x		50 - 32 - 160/152		
				160/165		
	x		x	32 - 160/152		
				160/165		
x		x		50 - 32 - 200/185		
				200/205		
	x		x	32 - 200/185		
				200/205		
x		x		65 - 50 - 125/104	ø16	
				125/117		
				125/128		
	x		x	40 - 125/104		
				125/117		
				125/128		
x		x		65 - 50 - 160/154	ø22	
				160/165		
	x		x	40 - 160/154	ø16	
				160/165		
		x		65 - 40 - 200/189	ø22	
				200/202		
			x	40 - 200/189		
				200/202		
x		x		80 - 65 - 125/124	ø16	
				125/133		
	x		x	50 - 125/124		
				125/133		
x		x		80 - 65 - 160/146	ø22	
				160/161		
	x		x	50 - 160/146		
				160/161		
		x		80 - 50 - 200/180		
				200/202		
			x	50 - 200/180		
				200/202		
x		x		100 - 80 - 125/121		ø16
				125/130		
				125/137		
	x		x	65 - 125/121		ø16
				125/130		
				125/137		
		x		100 - 80 - 160/152	ø22	
				160/168		
			x	65 - 160/152		
				160/168		
		x		100 - 65 - 200/183	ø33	
				200/191		
				200/210		
			x	65 - 200/183		
				200/191		
				200/210		

50/60 Hz
Model A

NP, NPE, DNP, DNPE



NP, NPE, DNP, DNPE

50/60 Hz
Model A

SHAFT SEAL KIT

Pos.	Kit no.	485113	485114	485351	485371	485278	485372	985845	985909
	Pump shaft diam. (mm)	16	22	16	16	22	22	16	22
	Description	AUUE	AUUE	BUBE	BUBV	BBUE	BBUV	RUUE/V	RUUE/V
72a	O-ring	1	1	1	1	1	1	1	1
105a	Shaft seal			1	1	1	1		
	Shaft seal	1	1					1	1

Pos.	Kit no.	985850	485454	485453	485460	485459	485458	485457	485456
	Pump shaft diam. (mm)	16	16	22	16	16	22	22	33
	Description	AUUK	BUUE	BUUE	BQQE	BQQV	BQQE	BQQV	BQQE
72a	O-ring	1	1	1	1	1	1	1	1
105a	Shaft seal		1	1	1	1	1	1	1
	Shaft seal	1							

Pos.	Kit no.	485455	485353	485373	485448	985624	985625
	Pump shaft diam. (mm)	33	33	33	33	33	33
	Description	BQQV	BBUE	BBUV	BUUE	GQQE	GQQV
72a	O-ring	1	1	1	1	1	1
105a	Shaft seal	1	1	1			
	Shaft seal				1	1	1

WEAR PARTS KIT

Pos.	Kit no.	485125	485122	485352	485279	485354	485449
	Pump shaft diam. (mm)	16	22	16	22	33	33
	Description	AUUE	AUUE	BUBE	BBUE	BBUE	BUUE
10	Coupling pin	1	1	1	1	1	1
45	Neckring	1		1			
49c	Wear ring	1		1			
51	Shaft	1	1	1	1	1	1
67	Lock nut	1	1	1	1	1	1
72a	O-ring	1	1	1	1	1	1
73	Lock washer	1	1	1	1	1	1
105a	Shaft seal			1	1	1	1
	Shaft seal	1	1				
115	Spacer					1	1

COUPLING COMPLETE

Pos.	Kit no.	339119	339124	339128	345107	345108	345109
	D shaft motor/pump	19/16	24/16	28/16	28/22	38/22	42/22
	Description						
10a	Coupling half	2	2	2	2	2	2
9	Screw	4	4	4	4	4	4
10	Pin	1	1	1	1	1	1

Pos.	Kit no.	485071	485039	485040	NEMA 485134	NEMA 485140	NEMA 485160
	D shaft motor/pump	42/33	48/33	55/33	28.6/16	34.9/22	41.3/22
	Description						
10a	Coupling half	2	2	2	2	2	2
9	Screw	4	4	4	4	4	4
10	Pin	1	1	1	1	1	1

50/60 Hz
Model A

NP, NPE, DNP, DNPE

